

AG COPP 750 WG



AG COPP 750 WG

FEATURES & BENEFITS

- Small particle size, giving better coverage and greater availability of copper ions.
- Low dust, WG formulation
- No pre-mixing required
- 75% active copper, a cost-effective copper application
- Compatible with most commonly used fungicides, insecticides and miticides
- Minimal heavy metal impurities, well below the levels recommended by the World Health Organization
- Packaged in convenient 15kg jugs
- Certified for use in organic production by NASAA

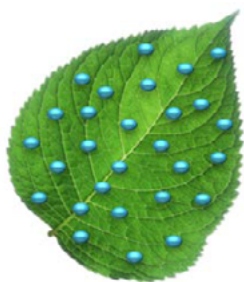
APVMA Approval No:	92457/135611
Active Constituent:	750 g/kg Copper (Cu) present as Cupric Oxide
Formulation:	Wettable Granule
Resistance Group:	M1 Fungicide
Pack Size:	15kg jugs

FINE PARTICLE SIZE = EXCELLENT COVERAGE = SUPERIOR PROTECTION

PROTECTANT FUNGICIDES: HOW DO THEY WORK?

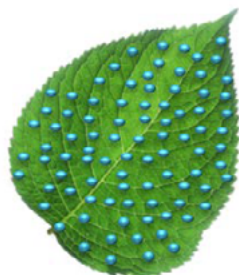
When Protectant Fungicides are applied they form a protective barrier on the plant surface to inhibit spore germination of the targeted disease.

All protectant fungicides rely on excellent coverage and tenacity in order to optimise fungicidal value. Particle size (microns) is a key feature which determines coverage, ultimately determining effectiveness and fungicidal value. Ag Copp 750 WG has a particle size of 1 to 2 microns and when applied, provides excellent coverage and weatherability, therefore optimising performance.



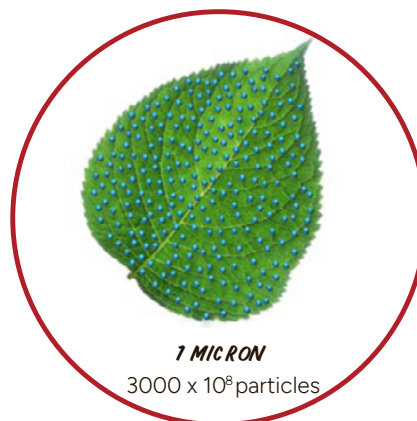
6 MICRON

15 x 10⁸ particles



4 MICRON

50 x 10⁸ particles



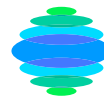
1 MICRON

3000 x 10⁸ particles



For more information, contact your local 7 Worlds representative

Ag Copp 750 WG



AG COPP 750 WG

USING THE RIGHT FORMULATION

SEASONAL CONDITIONS:

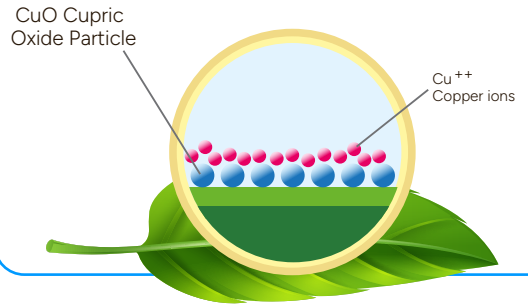
Ag Copp 750 WG is less soluble than other formulations, so is suited to wetter regions. This includes areas that are subject to daily heavy dew, rain showers, mist, overhead irrigation etc. However, Ag Copp 750 WG will perform in any conditions.

GROWTH STAGE:

Plant tissue is most susceptible to infection when new growth occurs and/or when tissue is damaged. The presence of moisture and exposed nutrients is an ideal media for pathogen infection. Therefore, it is critical a protectant fungicide such as Ag Copp 750 WG is applied, to prevent infection.

Copper Ions are released in the presence of moisture.

Copper-II ion (Cu⁺⁺) is taken up by the spores during germination and accumulates until sufficiently high concentration is achieved to kill the spore cell. Copper particles need to be on the plant material surface before fungal spores begin to germinate.



TARGET DISEASES ON VARIOUS CROPS*

Disease \ Crop	Avocado	Citrus	Mango	Potato
Anthracoze				
Black Spot				
Melanose				
Septoria Spot				
Brown Rot				
Phytophthora Stem Canker				
Target Spot				
Early Blight				

* Always refer to label before use.

AG COPP 750 WG COMPATIBILITY

ACTIVE INGREDIENT	BRAND NAME	COMPATIBILITY
Dithianon	Dinon	
Mancozeb	Fortuna Globe	
Mancozeb + metalaxyl	Metman	
Myclobutanil	Myclonil	
Sulphur	Nimbus	

NB: Mixtures with more than one product may not be compatible and should be checked in a jar test first. Physical compatibility does not guarantee biological compatibility.

For more information, contact your local 7 Worlds Ag representative

Ag Copp 750 WG